

SuperTalent Tera Drive

Firmware Update Tool User Guide

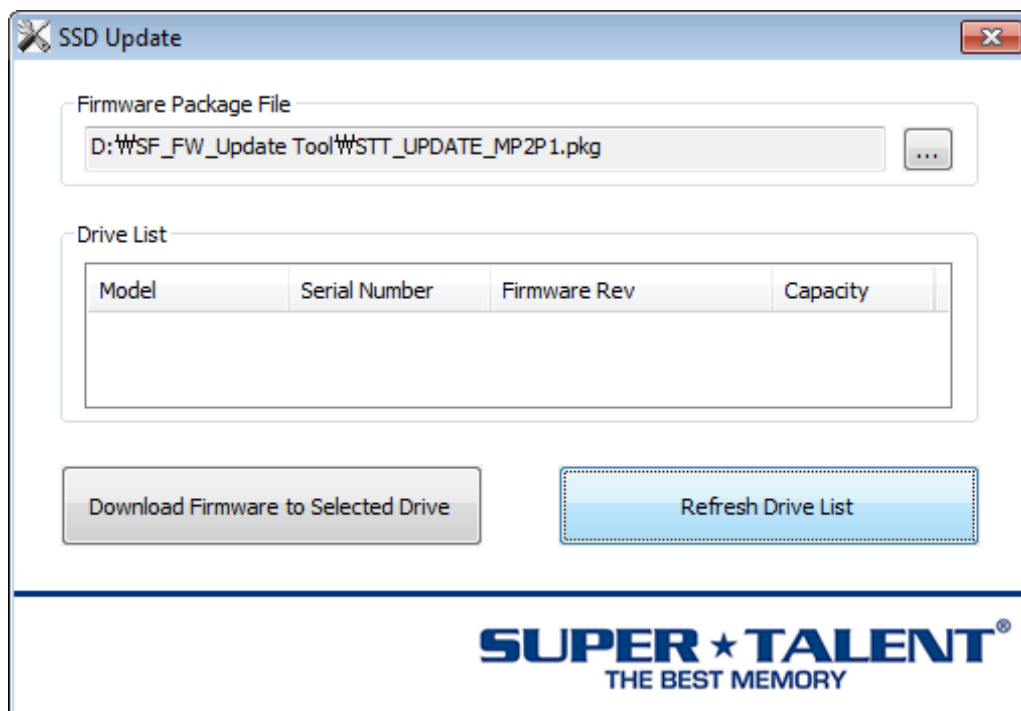
Overview

The SuperTalent Tera Drive Update Tool allows users to update firmware on drives operating in a Windows environment. To make a successful update, the following key points must be followed:

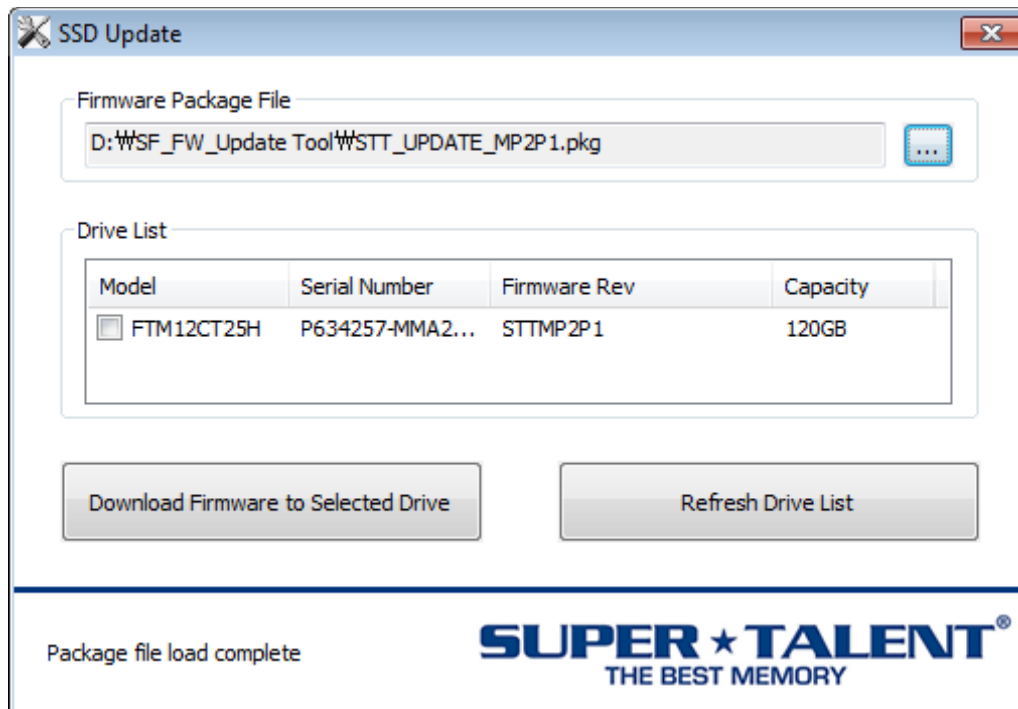
1. This update tool must be run for the TERA drive which is connected as **secondary drive**. Not system OS drive. OS drive must be different. The tool actually works on OS drive but we recommend using it as Data drive for safety. "Back up the drive".
2. It is required to use the **SATA II** port. Some of latest mother boards have SATA III ports on the boards. Please do not use SATA III ports. (recommendation)
3. **Do not** use any kind of Bridge controller like USB to SATA or IDE to SATA, etc.
4. For Intel's new **Sandy Bridge motherboard** users. Please **update the mother board BIOS** before update the drive. Otherwise the tool will not work.
5. This FW Update program works **only on AHCI** mode. Make sure you have AHCI setup in BIOS.

Using the Update Tool

On launch, the Update Tool will scan for drives. **IMPORTANT: The Update Tool requires administrator privileges.** No drives will be discovered if administrator privileges are not enabled. All discovered drives will be displayed in the drive list with a checkbox. The drive to be updated must be checked. Only one drive should be selected at a time.

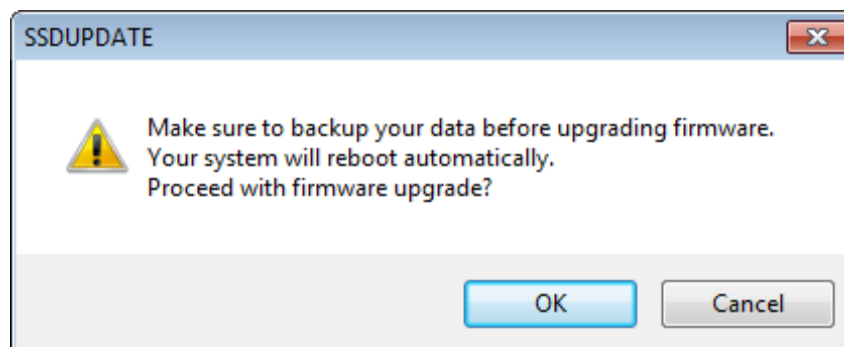


No Drives Found Drives Found



Drives Found

Once the target drive has been selected and the firmware package file is opened, the update is initiated by clicking “Download Firmware to Selected Drives.” **NOTE: the system will be automatically restarted following the download.** A pop-up will be displayed to advise the user to back-up data and indicate that the system will be restarted. This pop-up offers a cancel option that aborts the download. All applications should be closed prior to downloading firmware.



Pop-Up Warning